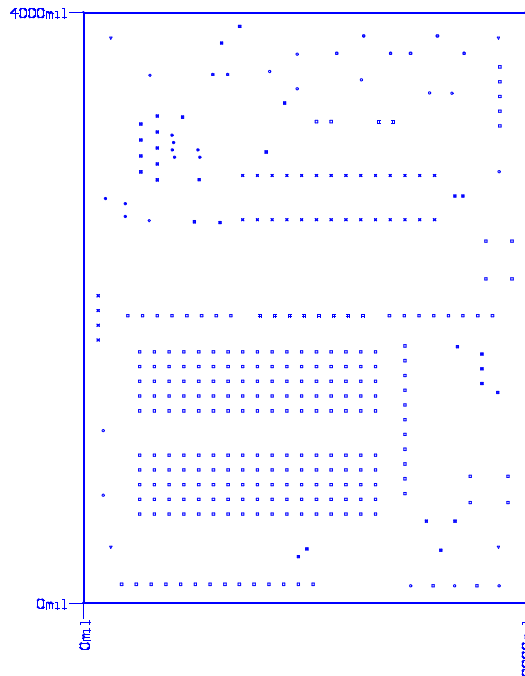


THROUGH HOLE

MARK	QTY	DIAM	PLTD		
.	9	15mil	0.381mm	PTH	Round
.	17	28mil	0.7112mm	PTH	Round
.	32	35mil	0.889mm	PTH	Round
.	2	35.433mil	0.9mm	PTH	Round
.	12	40mil	1.016mm	PTH	Round
.	238	42mil	1.0668mm	PTH	Round
.	12	67mil	1.7018mm	PTH	Round
.	6	70mil	1.778mm	PTH	Round
.	2	120mil	3.048mm	PTH	Round
.	4	125mil	3.175mm	PTH	Round
.	334	Total			

FABRICATION NOTES:

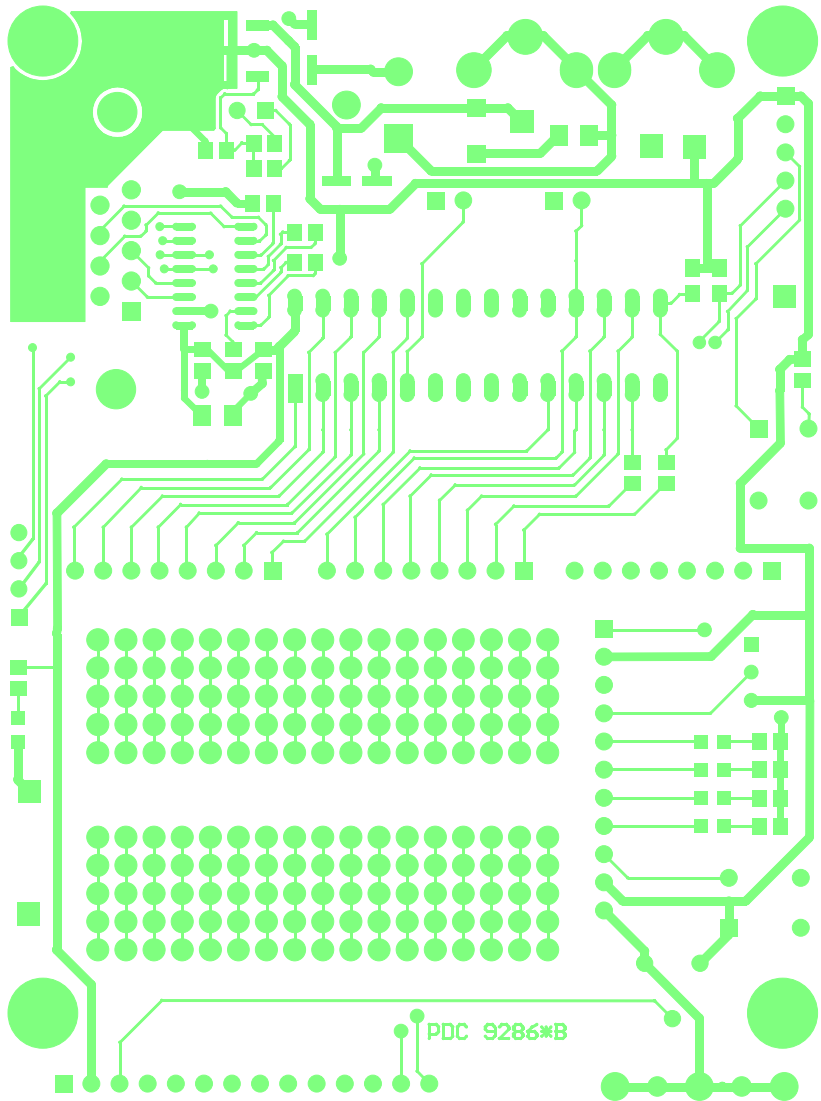
- RoHS COMPLIANT CERTIFICATION OR MATERIAL DECLARATION REQUIRED.
- MATERIAL:
 - UNLESS OTHERWISE SPECIFIED IN THE STACK VIEW:
 - A. NELCO 4000-11 OR IS420 OR EQUIVALENT. MATERIAL MUST CONFORM TO UL94V-0.
 - B. USE 1/2 oz. COPPER FOIL FOR EXTERNAL LAYERS, 1 oz COPPER FOIL FOR INTERNAL LAYERS.
 - C. OVERALL METAL THICKNESS .063 +/- 10%.
- DRILLING:
 - A. DIAMETERS IN DRILL TABLE ARE FINISHED HOLE SIZES +/- .003 UNLESS SPECIFIED.
 - B. TEARDROP ALLOWED ON ENTRY OF VIA ON EVERY TRACE LAYER.
- PLATING:
 - A. COPPER PLATING IN THRU-HOLES .001" min.
- MARKINGS:
 - A. SILKSCREEN IN WHITE NON-CONDUCTIVE EPOXY INK ON PRIMARY SIDE OF THE BOARD OR BOTH SIDES IF APPLICABLE.
- FINAL FABRICATION:
 - A. SOLDERMASK PRIMARY AND SECONDARY SIDE OF BOARD USING LIQUID PHOTOIMAGABLE MASK OVER BARE COPPER PER IPC-SM-840. SOLDERMASK COLOR ****BLUE****.
- FINISH:
 - A. SHALL BE ELECTROLYTIC NICKEL/GOLD. ELECTROLESS ELECTROLESS NICKEL/IMMERSION GOLD (ENIG).
 - B. NICKEL THICKNESS: 100-200 MICROINCHES/ GOLD THICKNESS 3-10 MICROINCHES.
- BOARDS SHALL BE PURCHASED FROM UL RECOGNIZED VENDORS ONLY AND SHALL BE MARKED IN COPPER ON SECONDARY SIDE OF BOARD WITH VENDORS UL IDENTIFICATION FLAMMABILITY RATING (94V-0), DATE CODE (WWYY) AND RoHS COMPLIANT SYMBOL.
- MANUFACTURED BOARD TO BE IN ACCORDANCE WITH PERFORMANCE STANDARD IPC-6011/6012 CLASS 2. BOARD TO BE INSPECTED PER IPC-600-A CLASS 2.
- MAXIMUM BOW OR TWIST SHALL NOT EXCEED 0.007 in/in.



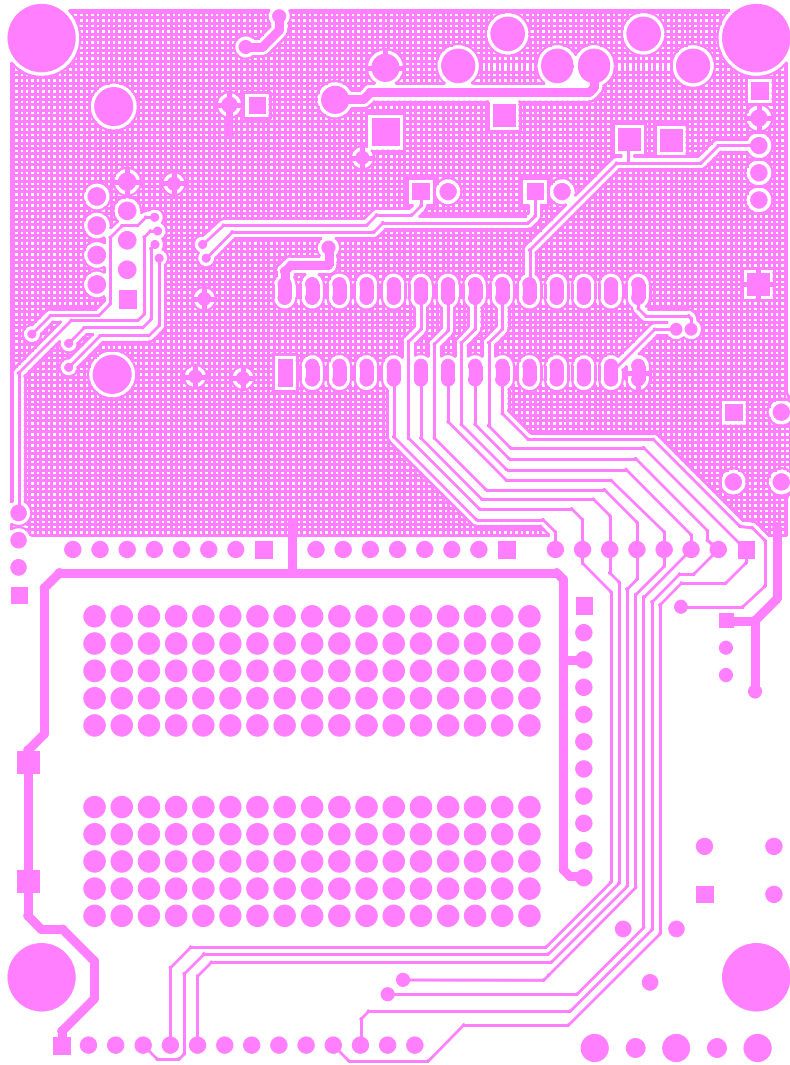
LAYER CONSTRUCTION - FILE IDENTIFICATION

DRILL AND TRIM.GD1>

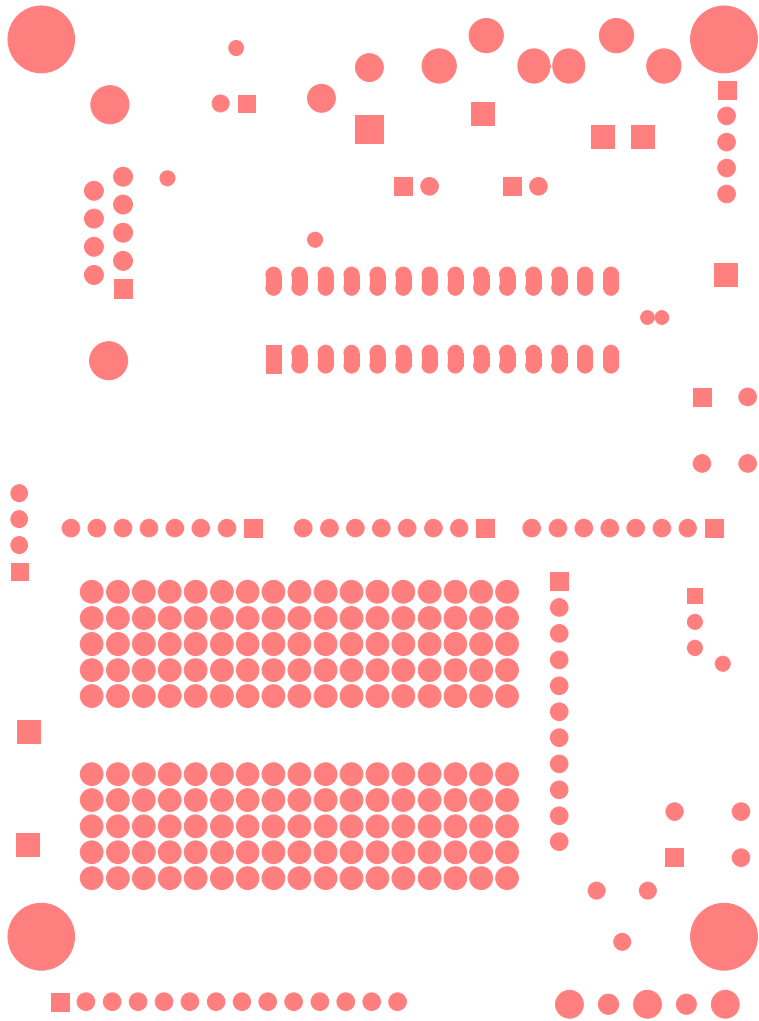
ALL DIM IN MILS	Cypress		Cypress Semiconductor 10147 W. Emerald Street Boise Idaho 83704 SN@CYPRESS.COM	
	ENGR Robbin Ranzel (208) 489-9382	TITLE PSoCEVAL1		
OWN Brien Sherer (208) 863-8470	PART NO: PDC-9286* B	REV E	DATE 31 OCT 06	
MATERIAL: <input type="checkbox"/> SEE NOTES <input type="checkbox"/>	FILE NAME	LAYER	GERBER	



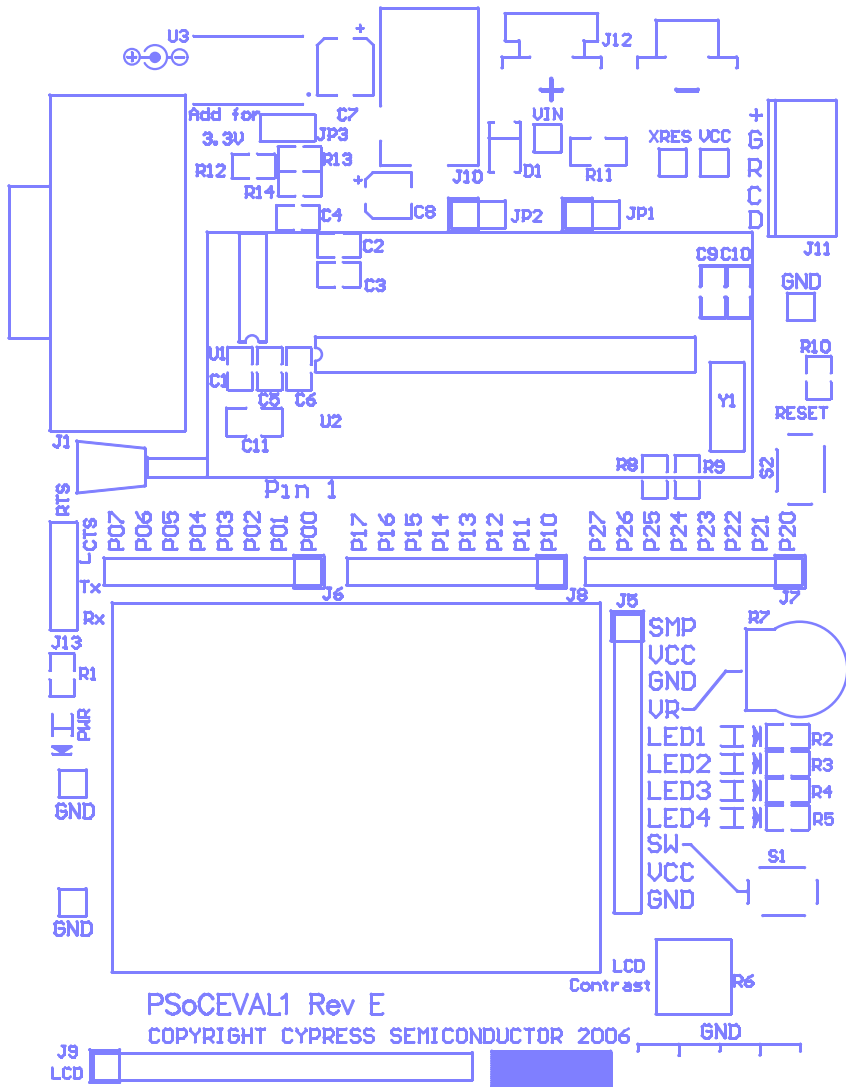
TOP COPPER (.6TL)



BOTTOM COPPER (.GBL)



BOTTOM SOLDERMASK (.GBS)



TOP OVERLAY (.GTO)